

Middle Tennessee District

FAIR



September 23rd - October 1st



MTDF 111



Sponsored by the Lawrenceburg Rotary Club

WELCOME TO THE 2022 MIDDLE TENNESSEE DISTRICT FAIR!

The Lawrenceburg Rotary Club is excited to bring you a nine-day Middle Tennessee District Fair in 2022. The MTDf has been a celebration and showcase of our community's talents that stretches back for generations. Our fair has a rich history that showcases local agriculture. It's a place where you can socialize with old friends and make new ones, learn a new hobby, spark a lifelong interest, or maybe just sit and enjoy some really great food. From our livestock pavilion, beauty pageants, arena events, three exhibit halls, and an exciting carnival midway, we have plenty to see and do. This year's nine-day fair will allow us to have new arena events and bring back some of your favorites from the past. I invite you to browse through this catalog to see what we have to offer.

On behalf of the Middle Tennessee District Fair, I would like to thank all of our volunteers, vendors, entrants and spectators. Your participation is what makes our fair. I hope being part of the MTDf brings you much enjoyment; and as always, we can't wait to see the lights, hear the sounds, smell the food, and most of all visit with you!

**THANK YOU FOR BEING A PART OF THE
MIDDLE TENNESSEE DISTRICT FAIR!**

Tad Keaton, 2022 Fair Manager



THE ROTARY CLUB OF LAWRENCEBURG

The Rotary Club of Lawrenceburg was chartered in 1947 and is a member of Rotary International. We serve Lawrence County, Tennessee with a membership of approximately 90 local Rotarians. Lawrenceburg Rotary is an active club that endeavors to have fun while serving our community through various projects and activities. Our motto is "Service Above Self". We are a member of Rotary International which consists of over 1.2 Million business and professional people who are members of local Rotary Clubs that operate autonomously in over 200 countries and regional areas. The Lawrenceburg Rotary Club has been recognized by Rotary International District 6760 with recent honors including Governor's Award for Most Outstanding Club in 1997-98, Best Community Service in 1998-99, Best Community Service Project in 1999-2000 (Fairside Park), Mid-Size Club of the Year in 2000-01, Mid-Size Club of the Year in 2001-02, Best Ongoing Project (Lawrenceburg Rotary Club Park) in 2002-03, Best Community Service in 2003-04, Mid-Size Club of the Year in 2004-05, Significant Achievement in 2004-05, Best Community Service in 2005-06, Best Club Service in 2006-07, Significant Achievement in 2006-07, Governor's Award for Most Outstanding Club in 2006-07, Best International Service in 2007-08, Best International Service in 2008-09, Best Community Service in 2008-09, Best International Service 2009-10, Large Size Club of the Year in 2009-10, Best Club Service in 2010-11, Best International Service in 2010-11, Large Size Club of the Year in 2010-11, Best International Service in 2011-12, Best International Service in 2012-13, Best New Generations Service in 2012-13, Best Club Service in 2013-14, Best International Service in 2013-14, Outstanding Achievement (Rotary Park Arena) in 2014-15, Governor's Award for Most Outstanding Club in 2014-15 and Five Avenues of Service, 2015-16, 2016-17 Large Club of the Year, 2017-18 Five Avenues of Services, 2018-19 Five Avenues of Service, Ongoing Project (MTDF), Best Large Club Bulletin, 2019-20 Five Avenues of Service, Ongoing Project (Park), 2020-21 International Avenue of Service, 2021-22 Club Avenue of Service.

PARTIAL SUMMARY OF CLUB PROJECTS

Please visit our club website for a complete description of club projects.

www.rotarylanceburgtn.org

1. Maintenance and Improvement of Lawrenceburg's Rotary Park
2. Sponsorship and Management of the award-winning Middle Tennessee District Fair
3. Sponsorship and Production of the Rumble at the Crossroads Truck and Tractor Pull
4. Food Packaging for Rise Against Hunger
5. Support for various community projects throughout the year
6. Scholarships and Recognition for deserving local residents
7. Sponsorship and Support for Interact Clubs in the county's three high schools
8. Management of an International Service Project in Honduras
9. Support for Rotary International Projects through active support of The Rotary Foundation

MIDDLE TENNESSEE DISTRICT FAIR 2022

Sponsored by:

The Lawrenceburg Rotary Club



Regular Meeting Each Friday
12:00 Noon at Rotary Park

www.MTDFair.org

Office: (931) 762-4678

Fax: (931) 762-7917

Mailing Address:

Lawrenceburg Rotary Club
P.O. Box 563
Lawrenceburg, TN 38464

Physical Address:

927 North Military
Lawrenceburg, TN 38464



*****Scan now to visit the Middle Tennessee District Fair's Website*****

Index to Program

Schedule of Activities	4	Youth Horticulture	33
Admission/Other Fees	6	Youth Home Economics	35
Board of Directors/Steering	8	Youth Baked Goods	40
Rules and Regulations	10	Field/Forage Crops Adults	43
TN Dept. of Agriculture Rules	12	Horticulture	45
Entry of Exhibits	14	Honey Show	49
Removal of Exhibits	14	Value Added Farm Products	52
Livestock Rules and Regulations	15	Food Preservation	54
Livestock Entry Form	16	Sewing and Stitchery	56
Midget Wrestling Warriors	18	Handicrafts	59
Rabbit Show	19	Dolls	59
Poultry Show/Sale	19	Baking	61
Sheep Show	20	Educational Exhibits	62
Dairy Show	21	Flower Show	63
Junior Dairy Show	22	Art, Adult/High School	69
Beef Show (Part 1)	23	Art, Preschool/Kindergarten/JR High	70
Beef Show (Part 2)	25	Senior Citizen Crafts	71
Junior Beef Heifer Show	27	Photography	72
Commercial Heifer	28	Woodworking	73
Market Lamb Show	29	Can Food Drive Info	76
Junior Meat Goat Show	31		
Youth Field Crops	32		

MIDDLE TENNESSEE DISTRICT FAIR 2022

Daily Schedule of Activities

Friday, September 16th

Individual Agricultural and Home Economics Entries 2:00pm – 6:00pm

Saturday, September 17th

Individual Agricultural and Home Economics Entries 8:00am – 12:00pm
Agricultural and Home Economics Judging 1:00pm

Friday, September 23rd

Gates Open 10:00am
Potted Plants and Hanging Plants Entries 1:00pm – 5:00pm
Exhibit Buildings Open 5:00pm
Midway Opens (Wade Shows) 5:00pm
Motocross & ATV Races 6:30pm
MTDF Free Concert Series 7:00pm

Saturday, September 24th

Rabbit Show Judging 8:00am
Cut Flower Entries 9:00am – 12:00pm
Adult & 4H Baking Entries 9:00am – 12:00pm
4-H Poultry Show 10:00am
Gates Open 10:00am
Midway Opens (Wade Shows) 11:00am
Little Miss Fairest of the Fair (Old Crockett Theatre) 12:00pm
Flower Show Judging 1:00pm
Adult & 4H Baking Judging 1:00pm
Junior Miss Fairest of the Fair (Old Crockett Theatre) 2:00pm
Miss Fairest of the Fair (Old Crockett Theatre) 4:00pm
Exhibit Buildings Open 5:00pm
Tough Truck Challenge 6:30pm
MTDF Free Concert Series 7:00pm

Sunday, September 25th

Gates and Exhibit Buildings Open 1:00pm
Midway Opens (Wade Shows) 1:00pm
Miss Tiny Tot Fairest of the Fair (Old Crockett Theatre) 2:00pm
Tiny Miss Fairest of the Fair (Old Crockett Theatre) 4:00pm
MTDF GiveAway 6:00pm

Monday, September 26th

Gates and Exhibit Buildings Open 10:00am
Sheep Show 5:00pm
Midway Opens (Wade Shows) 5:00pm
Junk Car Jump & Run (Cars & Wagons Only-See website for info) 6:30pm

MIDDLE TENNESSEE DISTRICT FAIR 2022

Daily Schedule of Activities Continued

Tuesday, September 27th

Gates and Exhibit Buildings Open	10:00am
Open & Junior Dairy Show	5:00pm
Midway Opens (Wade Shows)	5:00pm
Junk Car Jump & Run (Open-See website for info)	6:30pm

Wednesday, September 28th

Gates and Exhibit Buildings Open	10:00am
Midway Opens (W.G. Wade Shows)	5:00pm
Junior Meat Goat Show	5:00pm
Midget Wrestling Warriors	6:30pm

Thursday, September 29th

SENIOR CITIZENS' DAY - \$2.00 Admission 10:00am - 2:00pm

Gates and Exhibit Buildings Open	10:00am
Free Lunch & Entertainment for Senior Citizens	11:30am – 1:30pm
Midway Opens (W.G. Wade Shows)	5:00pm
Beef Show (OPEN Show 1)	5:00pm
Demolition Derby	6:30pm
MTDF Free Concert Series (Rotary Entertainment Stage)	7:00pm

Friday, September 30th

SCHOOL DAY – All Students and Teachers Admitted Free until 3:30pm

Gates and Exhibit Buildings Open	10:00am
School Day Athletic Events	10:00am
Spelling Bee	10:00am
Midway Opens (Wade Shows)	11:00am
School Day Give-Away	3:30pm
Beef Show (OPEN Show 2)	5:00pm
Granger Smith Concert	7:00pm

Saturday, October 1st

Gates and Exhibits Buildings Open	10:00am
Midway Opens (Wade Shows)	11:00am
Junior Beef Show	3:00pm
Truck and Tractor Pull	6:30pm
MTDF Free Concert Series (Rotary Entertainment Stage)	7:00pm

Sunday, October 2nd

Removal of Exhibits	2:00pm – 6:00pm
---------------------	-----------------

MIDDLE TENNESSEE DISTRICT FAIR 2022

ADMISSION FEES

General Admission - Adults (13 and older)	\$ 7.00 each
General Admission - Adults - Friday 30th & Saturday 1st ONLY**	\$ 10.00 each
General Admission - Children (6 thru 12)	\$ 5.00 each
Children Admission - Under 6, when attended	FREE
General Admission - Weekly Pass	\$ 35.00 each
General Admission - Senior Citizens' Day 10:00am - 2:00 P.M.	\$ 2.00 each

**Free admission ticket given to students living outside Lawrence County is good for any day.*

BEAUTY PAGEANTS AT THE OLD CROCKETT THEATRE

All Seats \$ 7.00 each

MIDWAY (W. G. Wade Shows) ARM BAND PRICING

Armband presale begins 8-1-22 and ends 9-21-22	- \$20
Monday through Thursday	5pm until close - \$30
Friday	11am until close - \$30
Saturday	11am until close - \$35
Sunday	1pm until close - \$30

OTHER ARENA EVENTS – No Charge, all seats first come, first serve

- Junk Car Jump and Run (Cars and Wagons Only)
- Junk Car Jump and Run (Car, Van, SUV)
- Tractor / Truck Pull
- Demolition Derby
- Tough Truck
- Motocross
- Midget Wrestling



MIDDLE TENNESSEE DISTRICT FAIR 2022

****GRANGER SMITH CONCERT****

Friday, September 30th at 7:00pm



STANDING AREA	\$100.00
PLATINUM 1	\$75.00
PLATINUM 2	\$50.00
GOLD	\$40.00
SILVER	\$25.00
BRONZE	\$15.00
GENERAL ADMISSION	\$5.00

Concert tickets may be purchased on-line at www.MTDFair.org starting August 5th at 10am. Concert tickets go on sale SEPTEMBER 6th in the Fair Office. We accept all major credit cards.

Lawrenceburg Rotary Club Board of Directors 2022 / 2023

Club President	Jason Armbruster
President Elect	Tiffany Cope
Vice President	John Johnstone
Secretary	Maria Santini
Treasurer	John Beasley
Director	Tad Keaton
Director	Tina Holt
Director	Scott Beasley
Immediate Past President	Greg Kelso



ARCTIC AIR
Heating and Air Conditioning

Financing Available!

(931) 964-4900

“When you need us, we’ll be there”

We Service ALL Makes & Models

www.arctic-air.com

2022 MTFD Executive Committee

Jason Armbruster	Club President/ Asst. Fair Manager
Tad Keaton	Fair Manager
Heath Hill	Asst. Fair Manager/ Arena Coordinator
Todd Tingle	Asst. Arena Coordinator/ Tough Truck
Pat Hollman	Event Sponsors/ Sales/ Skybox Coordinator
John Beasley	Treasurer
Patty Hollman	Secretary/ Office Staff
Chris Inman	Carnival/ Tough Truck

Steering and Event Coordinators

Bob Augustin	Office/ Advertising/ Giveaway
Kristina Hill	Exhibit Hall
Mark Short	Orton Pavilion
Bill Phillips	Press Box/ Public Information
Maria Santini	Commercial Exhibits/ Pit Gate
Jason Weaver	Commercial Exhibits/ Photography/ Jumbotron
Billy Story	Concessions
Scott Beasley	Concessions/ School Day
Sid Garner	Gates/ Schedule
Jeff Johnson	Insurance
Phil Hood	Recycling
Randy Brewer	Senior Citizens Day
Charlie Brewer	Signs
Chad Moore	Public Safety
Gina Old	Beauty Pageant
Tiffany Cope	Concert/Live Music Series
Christa Williams	School Day/ Pit Gate/ Moto X
Greg Holt	Junk Car Jump & Run
John Johnstone	Schedule
Channing Cope	Demolition Derby
Lynn Burns	Medical/ Public Safety
Jon Guthrie	Medical/ Public Safety
Donna Pack	Office
Teresa Walker	Office
Rachel Lee	Farmer for a Day
Paul Wayne	Parking
Jodi Gambrell	Catalog

General Rules Governing the Fair

1. Anyone participating in the fair in any capacity shall be subject to these rules and other rules as may be promulgated by the Lawrenceburg Rotary Club for the purpose of managing the fair. Refusal to abide by such rules shall be cause for exclusion from the fairgrounds and entrance to future events.
2. The Rotary Club will employ guards to patrol the grounds. Anyone trying to fraudulently enter the grounds by climbing fences, or by any other means, will be arrested and prosecuted.
3. No "pass-out checks" will be issued.
4. Children are positively forbidden to play in the vicinity of Stock Barns, Concession Booths, Agricultural Buildings, and Tents. There will be no running up and down steps of the Grandstand. Parents and those who have children in their charge are requested to cooperate with the Rotary Club in enforcing these regulations.
5. Intoxication of any person on the grounds will be just cause for their removal from the grounds.
6. Property of privileged and concession people or patrons will be taken on the grounds at their own risk and kept in such places as they themselves provide, or agree to, and the Rotary Club will not be responsible for any loss, damage, or theft of same. Also, the Rotary Club will not be responsible for failure to perform its' part of the contract should officers of the law seize, or prevent any concessionaire or privileged person from operation.
7. No privilege or concession granted by the Rotary Club to any privileged person or concessionaire shall be construed as granting the privilege to sell anything or to do anything that is contrary to the laws of the City of Lawrenceburg, Lawrence County, the State of Tennessee, and/or the United States of America.
8. The Rotary Club reserves the right to cancel at any time, for reasons satisfactory to itself, any concession privilege, without reimbursement.
9. Right is reserved to inspect at any time any show, concession, booth, stall, or animal on the grounds.
10. All events, shows and competitive exhibits shall be held according to the rules published for that event. In the event that published rules for a specific event are in disagreement with these general rules, the rules published for the specific event shall apply.
11. Should a case arise not covered by these rules or the published rules for the specific event, it should be decided according to the rules of the association to which the class or breed may belong.
12. Competent judges will be provided. No one interested in exhibits or who is entered as an exhibitor in the same department will be eligible to judge.
13. In cases where one person makes his own competition, only one cash prize shall be awarded, to be based on merit of the exhibit according to the judges.
14. The Rotary Club reserves the right to declare off any ring or show.
15. No variation from the premium list as given in the catalog shall be allowed except for typographical errors.
16. Any misrepresentation in connection with any entry, by fact stated or omitted, will render such entry not eligible.
17. In no case will the name of the owner or exhibitor be allowed attached until after the premiums have been awarded.

18. Any exhibitor who publicly expresses disapproval of a judge's decision, or who is guilty of conduct unbecoming an exhibitor, will be excluded from all exhibitions, his premiums forfeited, and he/she may be excluded from the grounds. Also, any exhibitor who enters an article and refuses to show, without good cause, may be subject to the same treatment.
19. Any exhibitor refusing to comply with instructions or request of superintendent or judges, or refusing to give information required, may be barred from such ring or any other exhibition and the fact made known.
20. All animals or articles exhibited on the fairgrounds shall be under the immediate charge of the superintendent for the class and shall be subject at all times to his orders, as well as the orders of the judges and show superintendent.
21. Hitching of animals and parking of vehicles will be only on spaces designated for this purpose.
22. No animals will be allowed to run at large on the fairgrounds.
23. All animals exhibited in competition must be under the control of the exhibitor at all times. Failure to accomplish this will result in the animal being excused from the arena.
24. Unless approved in advance by fair management, parking and/or use of motorized vehicles inside the MTDf perimeter is prohibited during operating hours. Approved vehicles will be issued an access permit which must be clearly displayed whenever the vehicle is inside the perimeter.
25. Access permits will be issued on a case by case basis to concessionaires or exhibitors who, in the sole opinion of fair management, have a legitimate operational need to have said vehicle inside the perimeter. Fair management reserves the right to designate parking arrangements, and to restrict vehicle movement on the fairgrounds. A permit fee may be required.
26. Vehicles participating in or operating in support of arena events are exempted from vehicle permitting requirements. These vehicles must remain in the arena or an adjacent parking area, and are subject to rules established by the arena event coordinator.
27. Single passenger, personal mobility vehicles (including motorized wheelchairs) operated by disabled persons are exempt from motorized vehicle permitting requirements.
28. MTDf assumes no liability for any vehicle parked or operated on the fairgrounds, either inside or outside of the MTDf perimeter.



**TENNESSEE DEPARTMENT OF AGRICULTURE
DIVISION OF CONSUMER & INDUSTRY SERVICES
ANIMAL HEALTH**

SUMMARY: LIVESTOCK HEALTH REQUIREMENTS FOR FAIRS AND EXHIBITIONS

I GENERAL:

A. All stalls, pens, chutes, etc. located on the grounds of fairs and exhibitions shall be thoroughly cleaned and disinfected with a disinfectant approved by USDA, APHIS between each scheduled fair or exhibition.

B. All livestock (except poultry and equine) which enter fairs and exhibitions shall be accompanied by an official veterinary health certificate with individual permanent identification. Certificates for this purpose shall be valid for ninety (90) days from date of issue. (Tennessee livestock only – out-of-state certificates are valid for thirty (30) days from the date of issue)

C. No animal showing clinical signs of infectious or communicable disease shall be allowed to enter or remain on premises of fairs or exhibitions. It shall be the responsibility of the manager of each event to assure prompt removal of such animals.

II LIVESTOCK AND POULTRY ORIGINATING WITHIN THE STATE OF TENNESSEE

[Certificates of Veterinary Inspection Valid for a Period of Ninety (90) Days]

A. SWINE:

All swine which enter fairs and exhibitions shall be accompanied by an official veterinary health certificate with individual permanent identification or sufficient description to identify each animal.

B. CATTLE:

All cattle which enter fairs and exhibitions shall be accompanied by an official veterinary health certificate with individual permanent, official identification.

C. POULTRY:

- (1) Sponsors of poultry shows or exhibitions shall notify the Tennessee Department of Agriculture at least thirty (30) days prior to show or exhibition.
- (2) Poultry found not to be in apparent good health shall be removed immediately from any show or exhibition.

D. HORSES & OTHER EQUIDAE:

Horses and other Equidae six (6) months of age and older must have a negative Equine Infectious Anemia test within the preceding twelve (12) months.

E. SHEEP

(1) All sheep imported into or through Tennessee shall be accompanied by an official health certificate and be in compliance with 0080-2-1-.02, and Title 9, Code of Federal Regulations, Part 79.1 through 79.4.

(2) All sheep that move within the state, with the exception of wethers under the age of 18 months that are produced for slaughter only, including for change of ownership, shows, fairs, expositions or slaughter shall be permanently, individually identified by a method approved in Title 9, Code of Federal Regulations, Part 79.1 through 79.4.

F. GOATS

(1) Goats imported into or through Tennessee shall be accompanied by an official health certificate and be in compliance with 0080-2-1-.02, and Title 9, Code of Federal Regulations, Part 79.1 through 79.4.

(2) Goats imported into Tennessee for immediate slaughter to an approved slaughter establishment or to an approved livestock market for sale to a slaughter establishment shall only be required to have a transportation document and be in compliance with Title 9, Code of Federal Regulations, Part 79.1 through 79.4.

(3) All registered breeding goats, goats that have been commingled with sheep, goats for exhibition and dairy goats that move within the state, including for change of ownership, shows, fairs, expositions or slaughter shall be permanently, individually identified by a method approved in Title 9, Code of Federal Regulations, Part 79.1 through 79.4.

G. CAMELIDS: Camelids must have an official veterinary health certificate as provided in Rule 0080-2-3-.01 (1).

H. CAPTIVE CERVIDAE: Captive Cervidae must have an official veterinary health certificate as provided in Rule 0080-2-3-.01 (1).

III LIVESTOCK AND POULTRY ORIGINATING OUTSIDE THE STATE OF TENNESSEE

Livestock and Poultry entering fairs and exhibitions from areas outside the State of Tennessee shall be subject to current Tennessee import requirements. Please contact the state veterinarian's office regarding questions or recent changes to these rules. These interstate requirements are summarized as follows:

A. ALL SPECIES (except poultry):

Official Certificate of Veterinary Inspection valid for thirty (30) days and individual permanent official identification, except for equine. Equine must have sufficient description to identify the animal.

B. CATTLE:

Certificate of Veterinary Inspection and additional requirements as follows:

(1) Tuberculosis: No requirements except for cattle originating from regions not considered free of tuberculosis.

(2) Brucellosis: No requirements except for cattle originating from regions not considered free of brucellosis. Test eligible cattle – Intact male or female cattle eighteen (18) months or older. (Vaccinates and non-vaccinates)

C. SWINE:

No testing requirements for swine unless originating from a region not considered free of Brucellosis and Pseudorabies.

D. HORSES AND OTHER EQUINES:

Animals six (6) months of age or older - negative equine infectious anemia (Swamp Fever) test within twelve (12) months.

E. POULTRY:

Originate directly from a Pullorum-Typhoid Clean Flock and an H5/H7 Avian Influenza Clean Flock or be accompanied by evidence of a negative Pullorum Typhoid test within ninety (90) days and a negative Avian Influenza test within twenty-one (21) days.

F. SHEEP

(1) All sheep imported into or through Tennessee shall be accompanied by an official health certificate and be in compliance with 0080-2-1-.02, and Title 9, Code of Federal Regulations, Part 79.1 through 79.4.

(2) All sheep that move within the state, including for change of ownership, shows, fairs, expositions or slaughter shall be permanently, individually identified by a method approved in Title 9, Code of Federal Regulations, Part 79.1 through 79.4.

G. GOATS

(1) Goats imported into or through Tennessee shall be accompanied by an official health certificate and be in compliance with 0080-2-1-.02, and Title 9, Code of Federal Regulations, Part 79.1 through 79.4.

(2) Goats imported into Tennessee for immediate slaughter to an approved slaughter establishment or to an approved livestock market for sale to a slaughter establishment shall only be required to have a transportation document and be in compliance with Title 9, Code of Federal Regulations, Part 79.1 through 79.4.

(3) All registered breeding goats, goats that have been commingled with sheep, goats for exhibition and dairy goats that move within the state, including for change of ownership, shows, fairs, expositions or slaughter shall be permanently, individually identified by a method approved in Title 9, Code of Federal Regulations, Part 79.1 through 79.4.

H. CAMELIDAE: Same requirements as for cattle.

I. CERVIDAE:

Certificate of Veterinary Inspection and additional requirements as follows:

(1) Brucellosis: Same requirements as for cattle.

(2) Tuberculosis:

(a) All cervidae shall originate in herds which have had a negative herd test for tuberculosis within twelve (12) months with a USDA approved single cervical test and individual imported animals shall be negative to the single cervical test within thirty (30) days of entry; or

(b) Animals not originating in tested herds as described above must test negative to two (2) single cervical tests at least ninety (90) days apart, the second test conducted not more than thirty (30) days prior to entry.

NOTE: (Contact an accredited veterinarian for further details of import rules).

IV Fair association or exhibition or management shall inform exhibitors of the rules of this chapter and shall notify the State Veterinarian or his agent of any violations. Exhibitors shall present evidence of compliance with this chapter to the State Veterinarian or his agent upon request.

These rules constitute a minimum legal standard and in no way restrict the right of fair and exhibition managers to establish additional or more stringent requirements.



ENTRY OF EXHIBITS

AGRICULTURAL & HOME ECONOMIC'S EXHIBITS

All individual entries must be made between the hours of
2:00 PM and 6:00PM, Friday, September 23rd and
8:00 AM and 12 Noon, Saturday, September 24th.
Judging will begin at 1:00 PM, Saturday, September 24th.

EXCEPTIONS:

POTTED AND HANGING PLANTS must be entered Friday, September 23rd between 1:00PM and 5:00PM.
HORTICULTURE SPECIMENS AND ARRANGEMENTS must be entered Saturday, September 24th
between 9:00AM and Noon. For other information see Flower Show and Show Rules.

ADULT AND YOUTH HOME ECONOMICS baked goods must be entered on Saturday, September 24th
between 9:00AM and Noon.

LIVESTOCK entries are to be made as set out in Livestock Rules.

RULES PERTAINING TO EXHIBITS

1. Only present year products owned and grown by Exhibitors may compete for prizes. Except for livestock, all entries must be new work, which has not been shown in a previous Middle Tennessee District Fair.
2. There will be no charge for credible exhibits. The Management reserves the right to decide whether or not exhibits shall be classed as credible. MTDf is a family-oriented event. Entries that contain language, images, or other content deemed by management to be inappropriate for showing at the fair will not be accepted.
3. Entries must comply with quality noted in catalog.
4. All exhibits must be delivered to superintendent in charge of the department on the fairground, and no exhibit will be received by mail, express or freight.
5. Only one entry per person will be accepted in any one lot except where so stated under department head.
6. All departments are open to any person in the Tennessee Valley area unless notice is made under head of class in catalog.
7. Premiums will be paid by check at a designated area beginning no later than Thursday, except livestock, and these will be paid as soon as winners list is completed, turned into the office, and processed. Management reserves the right to refuse payment of premiums in case of disasters such as fire, windstorm, flood, and any others beyond their control.
8. Please cash promptly the premium checks, as they will not be valid after sixty days.

EXHIBITORS RISK

The Lawrenceburg Rotary Club will use ordinary care to protect properties of exhibitors at the fair and assumes no responsibility beyond ordinary care. The Exhibitor agrees that the Lawrenceburg Rotary Club will not be responsible for an exhibit when the Lawrenceburg Rotary Club exercises ordinary care.

REMOVAL OF EXHIBITS

EXHIBITS MAY ONLY BE REMOVED FROM THE FAIR AS FOLLOWS:

Sunday, October 2nd from 2:00PM until 6:00PM

Since it is necessary for the buildings to be empty by Tuesday morning following the fair, management requests that all exhibits be removed on Sunday, October 2nd. In order to remove your exhibits, you must produce the "ENTRY TAGS." No superintendent has the authority to release any exhibits without the "ENTRY TAGS." Please do not request them to do so. If you expect to get exhibits for someone else, please get their tags.

LIVESTOCK

Superintendent: Calvin Bryant 931-762-5506

Mark Short 931-762-5519

931-829-3496

Rules and Regulations:

1. All livestock classes are open to the world unless stated in notes dealing with that class of livestock.
2. All exhibitors of livestock, whether dairy cattle, beef cattle, goats or sheep must make application for their entries in order to assured of pens or stalls. Said applications should be made to Livestock Superintendent or Show Superintendent. Entries will be accepted on a first come, first served basis as long as space is available.
3. All livestock shall be exhibited at owner's risk. The Rotary Club, sponsor of The Middle Tennessee District Fair, will not be responsible for any loss or damage to any animals or equipment, but every reasonable precaution will be taken to prevent any such loss or damage.
4. Any exhibitor may enter as many animals as he/she desires, but not more than two prizes will be paid in any one lot to one exhibitor. Where there is only one entry in any livestock lot, the judge will have the option of awarding a first or second premium.
5. All animals must be entered in the owner's name and NO ANIMALS WILL BE ACCEPTED FOR ENTRY UNTIL REGISTRATION CERTIFICATE HAS BEEN PRESENTED. Exception will be made for Commercial heifers in Junior Shows. All animals can be checked for corresponding tattoo number and certificates, if superintendent desires. Health paper may be crosschecked against registration papers.
6. In the "Other Breeds" classes, animals to be shown must be Purebred and registered in their National Association.
7. Exhibitors must furnish their own feed and equipment. **All animals must be kept in places assigned to them.** Tie out time will be 9:00 PM each night for beef cattle. All beef cattle should be in the barn, in wash rack area, or in the process of returning to the barns by 9:00 AM each morning. No straw will be allowed in the barn.
8. ANY EXHIBITOR OR THEIR REPRESENTATIVE WHO FAILS TO FOLLOW LIVESTOCK RULES OR WHO SHOWS DISRESPECT TO SHOW OR FAIR OFFICIALS CAN HAVE THEIR EXHIBITS REMOVED FROM THE SHOW RING, FORFEIT ANY AND ALL PREMIUMS REWARDED AND CAN LOSE THEIR PRIVILEGE OF EXHIBITING AT FUTURE MIDDLE TENNESSEE DISTRICT FAIRS.
9. ALL LIVESTOCK EXHIBITED AT THE MIDDLE TENNESSEE DISTRICT FAIR MUST HAVE VALID HEALTH PAPERS. HEALTH PAPERS WILL BE VERIFIED BY THE SUPERINDENT PRIOR TO UNLOADING OF AN ANIMAL.
10. NO LATE ADMITTANCE ACCEPTED WITHOUT WRITTEN PERMISSION FROM LIVESTOCK SUPERINTENDENT.
11. ANY EXHIBITOR LEAVING BEFORE DESIGNATED RELEASE TIME WITHOUT WRITTEN PERMISSION FROM LIVESTOCK SUPRINTENDENT WILL FORFEIT ALL PREMIUM MONEY EARNED.
12. ALL ENTRY FEES ARE TO BE PAID WHEN LIVESTOCK IS ENTERED INTO THE SHOW.
13. BEEF CLASSES TO BE DETERMINED AFTER REGISTRATION. NATIONAL REGISTRY AND RULES APPLY TO ALL CATTLE.
14. Grade Level for ALL JUNIOR SHOWMANSHIP eligibility is grade level on January 1 of current year.

MIDDLE TENNESSEE DISTRICT FAIR

Livestock Entry Form--All Livestock Departments

Complete all blanks. Please put only 1 entry on each line.

Owner Name _____
Farm Name _____
Street _____
City, State, Zip _____
Telephone _____

Entry Fee Received: _____
Office Use Only
Entry Fees:
Sheep.....\$1.00 per head
Cattle.....\$5.00 per head
Fees Waived on Junior Classes

**ALL LIVESTOCK
MUST HAVE
HEALTH
CERTIFICATES**

Mail Completed Forms and Entry Fees To:	M. T. D. F. PO Box 563 Lawrenceburg, Tennessee 38464 (931-762-4678)
--	---

Dept.	Class	Lot	Open	Junior	Sex	Birthdate	Tag #

Total Entry Fees Enclosed \$ _____

This entry is subject to the rules and classifications as published in the Middle Tennessee District Fair Catalog. I agree to abide by all rules of the Fair.
Signature _____

EVOLUTION TOUR 2022



M
MIDGET
WRESTLING
WARRIORS

 MIDGETWRESTLINGWARRIORS
 @WARRIORMIDGETS
 MIDGETWARRIORS.COM
 MIDGETWRESTLINGWARRIORS

Showtime 6:30pm
Access to Ringside opens at 6:00pm
Ringside Tickets - \$10.00
Tickets can be purchased at MTDFair.org
Grandstand Seating is Free

DEPARTMENT 1 RABBIT & POULTRY SHOW

CLASS 1

Sponsored by the Lawrence County Rabbit Breeders Association

SHOWTIME: Saturday, September 24th, 2022 at 8:00AM

Secretary: Sarah Simbeck 931-852-4081

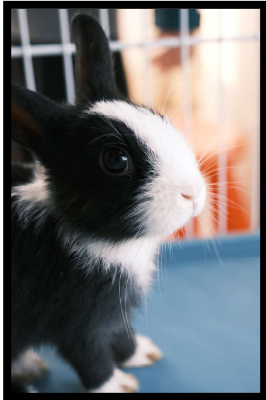
Class 1 Lot 1 Rabbits

\$125.00

Neither the Lawrence County Rabbit Breeders Association nor The Middle Tennessee District fair will be responsible for the loss of any rabbit shown or displayed. All reasonable precautions will be taken for the safe care. Judging will be Saturday, September 24th, 2022 at 8:00AM. All out of town rabbits may return home after the judging is completed. Local breeders must fill cages for displaying during the week of the fair.

A show catalog will be sent to all Southern Clubs with complete show details, i.e. payback sanction of breeds and entry free. Judges will be announced in the catalog.

Local rabbit breeders displaying rabbits will be the only individuals receiving a pass. The rabbit building will be open from 4:30PM to 10:00PM every night of the fair. The only exception will be Thursday, September 29th, and Friday, September 30th. These two days the building will be opened from noon to 10:00PM. Rabbits can be housed in the rabbit building the week before the fair and the week of the fair. There will be no exceptions with the final date being Monday, October 3rd, 2022.



CLASS 2

Lawrence County 4-H Poultry Show & Sale

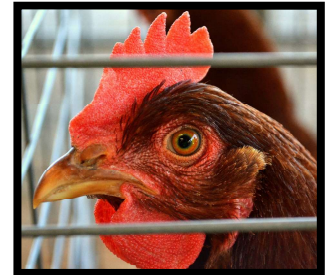
Superintendent: Matt Adams 931-762-5506

Saturday, September 24th, 2022

Check In 9:00 AM

Show 10:00 AM

Sale 10:30 AM



Class 2 Lot 1 Poultry

125.00

All livestock exhibited in any of the classes must be on the grounds as listed arrival times and must be in areas assigned to them. Any exhibitor leaving before designated release time without written permission from the livestock superintendent will forfeit all premium money earned.

DEPARTMENT 2

SHEEP SHOW (OPEN)

Superintendent: Calvin Bryant 931-762-5506

Arrive by 2:00PM, Monday, September 26th

Showtime 5:00PM, Monday, September 26th

Release by 9:00PM, Monday, September 26th

Entry Fee \$1.00 per head

Current Year-2022, Previous Year-2021, 2nd Previous Year-2020

Premium: 1st - \$15.00, 2nd - \$12.00, 3rd - \$9.00, 4th - \$6.00, 5th thru 8th - \$5.00

- CLASS 1 - SOUTHDOWN**
- CLASS 2 - SHROPSHIRE**
- CLASS 3 - KATADHINS**
- CLASS 4 - AOB WOOL TYPE**
- CLASS 5 - AOB HAIR TYPE**

ALL CLASSES ARE THE SAME IN ALL BREEDS

- Lot 1 Senior Ram Lamb born Sept 1 to Dec 31, Previous Year
- Lot 2 Early Junior Ram Lambs, born Jan 1 to Feb 15
- Lot 3 Late Junior Ram Lambs, born since Feb 16
- Lot 4 Pair Ram Lambs
- Lot 5 CHAMPION RAM - \$15.00
- Lot 6 RESERVE CHAMPION RAM - \$12.00
- Lot 7 Senior Yearling Ewe born Sept 1, 2nd Previous Year to Feb 15, Previous Year
- Lot 8 Junior Yearling Ewe born Feb 16 to August 31, Previous Year
- Lot 9 Pair Yearling Ewes
- Lot 10 Senior Ewe Lamb born Sept 1 to Dec 31, Previous Year
- Lot 11 January Junior Ewe born Jan Current Year
- Lot 12 February Junior Ewe born Feb Current Year
- Lot 13 March Junior Ewe born March Current Year
- Lot 14 Pair Ewe Lambs
- Lot 15 CHAMPION EWE - \$15.00
- Lot 16 RESERVE CHAMPION EWE - \$12.00
- Lot 17 Young flock to consist of two yearling ewes, two ewe lambs, and one ram lamb
- Lot 18 Pen of Four Lambs Exhibitor's pen to consist of four lambs with both sexes represented
- Lot 19 Pre 4-H Showmanship – AWARD



ANY EXHIBITORS LEAVING BEFORE DESIGNATED RELEASE TIME WITHOUT WRITTEN PERMISSION FROM LIVESTOCK SUPERINTENDENT WILL FORFEIT ALL PREMIUM MONEY EARNED.

DEPARTMENT 3

DAIRY SHOW (OPEN)

Superintendent: Calvin Bryant 931-762-5506
Mark Short 931-762-5519
931-829-3496

Arrive by 2:00PM Tuesday, September 27th,
Showtime 5:00PM, Tuesday, September 27th
Release by 9:00PM, Tuesday, September 27th
Entry Fee \$5.00 per head

Current Year-2022, Previous Year-2021, 2nd Previous Year-2020,
3rd Previous Year-2019, 4th Previous Year-2018, 5th Previous Year-2017
Premium: 1st - \$30.00, 2nd - \$20.00, 3rd - \$15.00, 4th - \$10.00, 5th - \$5.00

- CLASS 6 - JERSEY
- CLASS 7 - GUERNSEY
- CLASS 8 - HOLSTEIN
- CLASS 9 - BROWN SWISS
- CLASS 10 - AYRSHIRE

ALL CLASSES ARE THE SAME IN ALL BREEDS

- Lot 1 Junior Heifer Calf born March 1, Current Year or later and at least 4 months old
- Lot 2 Intermediate Heifer Calf born Dec 1, Previous Year to Feb 28, Current Year
- Lot 3 Senior Heifer Calf born Sept 1 Previous Year to Nov 30, Previous Year
- Lot 4 Summer Heifer Calf born June 1, Previous Year to Aug 31, Previous Year
- Lot 5 Junior Yearling born March 1, Previous Year to May 31, Previous Year
- Lot 6 Intermediate Yearling born Dec 1, 2nd Previous Year to Feb 28, Previous Year
- Lot 7 Senior yearling born Sept 1, 2nd Previous Year to Nov 30, Previous Year
- Lot 8 Junior Champion Heifer
- Lot 9 Junior Two Year Old Cow born March 1, 2nd Previous Year to Aug 31, 2nd Previous Year
(Note: Senior Yearlings in milk will show in Lot 9)
- Lot 10 Senior Two Year Old Cow born Sept 1, 3rd Previous Year to Feb 28, 2nd Previous Year
- Lot 11 Three Year Old Cow born Sept. 1, 4th Previous Year to to August 31, 3rd Previous Year
- Lot 12 Four Year Old Cow born Sept. 1 5th Previous Year to Aug. 31 4th Previous Year
- Lot 13 Aged Cow 5 Years and Older born before Sept 1, 5th Previous Year
- Lot 14 Senior Champion
- Lot 15 Grand Champion
- Lot 16 Best Uttered Lot 9 through 13 In Milk (Only One Place Will Be Awarded)
- Lot 17 Junior Get of Sire, Three animals by one sire, none of which have freshened
- Lot 18 Senior Get of Sire, Three animals by one sire, with at least two, which have freshened
- Lot 19 Produce of Dam, Two animals any age from the same cow
- Lot 20 Dam and Daughter, must be natural calf
- Lot 21 Dairy Herd, 4 cows that have freshened. All to be owned by exhibitor. One entry per exhibitor.
- Lot 22 Herdsman's Award. Judged on cleanliness of quarters, condition of cattle, someone to answer questions from visitors and cooperation with fair officials and fellow exhibitors.
- Lot 23 Pre 4-H Showmanship – Award

DEPARTMENT 4

JUNIOR DAIRY SHOW

Superintendent: Calvin Bryant 931-762-5506
Mark Short 931-762-5519
931-829-3496

ATTENTION: Exhibitor to whom cattle are registered must be present and participate in showing or prize will be forfeited.

Arrive by 2:00PM Tuesday, September 27th
Showtime at 5:00PM, Tuesday, September 27th
Release by 9:00PM, Tuesday, September 27th
Entry Fee (Junior Dairy Waived)

Current Year-2022, Previous Year-2021, 2nd Previous Year-2020,
3rd Previous Year-2019, 4th Previous Year-2018, 5th Previous Year-2017
Premium: 1st - \$30.00, 2nd - \$20.00, 3rd - \$15.00, 4th - \$10.00, 5th - \$5.00

CLASS 11 - JERSEY
CLASS 12 - GUERNSEY
CLASS 13 - BROWN SWISS
CLASS 14 - HOLSTEIN
CLASS 15 - AYRSHIRE

ALL CLASSES ARE SAME IN ALL BREEDS

Lot 1 Junior Heifer Calf March 1, Current Year or later and at least 4 months old
Lot 2 Intermediate Heifer Calf born Dec 1, Previous Year to Feb 28, Current Year
Lot 3 Senior Heifer Calf born Sept 1, Previous Year to Nov 30, Previous Year
Lot 4 Summer Heifer Calf born June 1, Previous Year to Aug 31, Previous Year
Lot 5 Junior Yearling born March 1, Previous Year to May 31, Previous Year
Lot 6 Intermediate Yearling born Dec 1, 2nd Previous Year to Feb 28, Previous Year
Lot 7 Senior Yearling born Sept 1, 2nd Previous Year to Nov 30, 2nd Previous Year
Lot 8 Junior Champion Heifer
Lot 9 Junior Two-year-old Cow born March 1, 2nd Previous Year to Aug 31, 2nd Previous Year
Lot 10 Senior Two-year-old Cow born Sept 1, 3rd Previous Year to February 28, 2nd Previous Year

All livestock exhibited in any of the classes must be on the grounds at listed arrival times and must be in areas assigned to them. All exhibitors leaving before designated release time without written permission from livestock superintendent will forfeit all premium money earned.

DEPARTMENT 5

BEEF SHOW (OPEN Show 1)

Thursday, September 29th

Superintendent: Calvin Bryant 931-762-5506
Mark Short 931-762-5519
931-829-3496

NATIONAL BREED REGISTRY AND RULES APPLY TO ALL CATTLE SHOWN

Arrive by 2:00pm Thursday, September 29th, 2022
Showtime: 5:00pm Thursday, September 29th, 2022
Release by 9:00pm Thursday, September 29th, 2022
Entry Fee \$5.00 per head

Classes to be determined after registration. Three (3) exhibitors and ten (10) animals required for class.
Any breed not having enough head to have a class will show in the other breeds class.
ALL BULLS ONE YEAR OR OLDER MUST BE SHOWN WITH A NOSE LEAD. NO EXCEPTIONS

Current Year-2022, Previous Year-2021, 2nd Previous Year-2020

Premium: 1st - \$30.00, 2nd - \$20.00, 3rd - \$15.00, 4th - \$10.00, 5th - \$5.00

ALL CLASSES ARE THE SAME IN ALL BREEDS

**16 - Hereford, 17 - Black Hereford, 18 - Percentage Hereford,
19 - Shorthorn, 20 - Shorthorn Plus, 21 - Charolais**

- Lot 1 Spring Heifer Calf, calved after March 1, Current Year
- Lot 2 Junior Heifer Calf, calved Jan 1 to Feb 28, Current Year
- Lot 3 Late Senior Heifer Calf, calved Nov 1 to Dec 31, Previous Year
- Lot 4 Early Senior Heifer Calf, Calved Sept 1 to Oct 31, Previous Year
- Lot 5 Summer Yearling Heifers, calved July 1 to Aug 31, Previous Year
- Lot 6 Spring Yearling Heifers, calved May 1, to June 30, Previous Year
- Lot 7 Late Junior Yearling Heifer, calved March 1 to April 30, Previous Year
- Lot 8 Early Junior Yearling Heifer, calved Jan 1 to Feb 28, Previous Year
- Lot 9 Senior Yearling Heifer, calved Sept 1 to Dec 31, 2nd Previous Year
- Lot 10 Best Pair of Females
- Lot 11 Grand Champion Female - \$30.00
- Lot 12 Reserve Grand Champion Female - \$20.00
- Lot 13 Junior Cow Calf Pair, cow under 40 months old with natural
Current Year calf at side
- Lot 14 Senior Cow Calf pair, cow over 40 months with natural Current
Year calf at side
- Lot 15 Champion Cow Calf Pair
- Lot 16 Spring Bull, calved after March 1, Current Year
- Lot 17 Junior Bull, calved after Jan 1 to Feb 28, Current Year
- Lot 18 Late Senior Bull, calved Nov 1 to Dec 31, Previous Year
- Lot 19 Early Senior Bull, calved Sept 1 to Oct 31, Previous Year
- Lot 20 Summer Yearling Bull, calved July 1, to Aug 31, Previous Year
- Lot 21 Spring Yearling bull, calved May 1, to June 30, Previous Year
- Lot 22 Late Junior Yearling Bull, calved March 1, to April 30, Previous Year

DEPARTMENT 5

BEEF SHOW (OPEN Show 1)

(Continued)

- Lot 23 Early Junior Yearling Bull, calved Jan 1, to Feb 18, Previous Year
- Lot 24 Senior Yearling Bull, calved Sept 1, to Dec 31, 2nd Previous Year
- Lot 25 Two Year Old Bull, calved Jan 1 to Aug 31, 2nd Previous Year
- Lot 26 Grand Champion Bull - \$30.00
- Lot 27 Reserve Grand Champion Bull - \$20.00
- Lot 28 Get of Sire, four animals by one sire, both sexes represented, show in the above lots
- Lot 29 Junior Get of Sire, three animals by one sire, both sexes represented
- Lot 30 Produce of Dam, any two animals produced by the same cow and exhibited in individual classes.

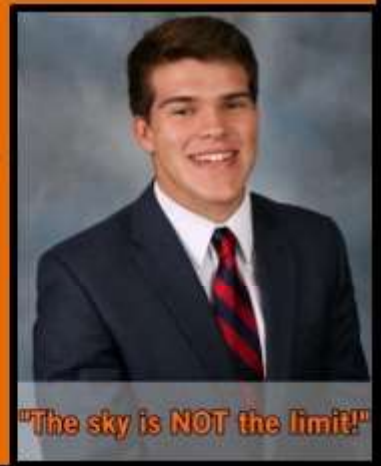


The Tanner Wray Foundation awards merit-based scholarships to students in Lawrence and surrounding counties. The TWF awarded \$18,000 in scholarships to date, and we hope to continue to add to that in the future.

Follow us on Facebook for more info on events and ways to donate at Tanner Wray Foundation!

The Tanner Wray Foundation

The Tanner Wray Foundation was created in memory of Joseph Tanner Wray, a 2015 graduate of Lawrence County High School. Tanner passed away suddenly on February 23, 2018 while boxing in a charity boxing match in Knoxville. At the time of his passing, Tanner was 20 years old and a junior at UTK.



"The sky is NOT the limit!"

DEPARTMENT 5

BEEF SHOW (OPEN Show 2)

Friday, September 30th

Superintendent: Calvin Bryant 931-762-5506
Mark Short 931-762-5519
931-829-3496

NATIONAL BREED REGISTRY AND RULES APPLY TO ALL CATTLE SHOWN

Arrive by 2:00pm Friday, September 30th, 2022
Showtime: 5:00pm Friday, September 30th, 2022
Release by 9:00pm Friday, September 30th, 2022
Entry Fee \$5.00 per head

Classes to be determined after registration. Three (3) exhibitors and ten (10) animals required for class.
Any breed not having enough head to have a class will show in the other breeds class.
ALL BULLS ONE YEAR OR OLDER MUST BE SHOWN WITH A NOSE LEAD. NO EXCEPTIONS

Current Year-2022, Previous Year-2021, 2nd Previous Year-2020

Premium: 1st - \$30.00, 2nd - \$20.00, 3rd - \$15.00, 4th - \$10.00, 5th - \$5.00

ALL CLASSES ARE THE SAME IN ALL BREEDS

**22 - Black Angus, 23 - Red Angus, 24 - Simmental,
25 - %Simmental, 26 - Chiangus, 27 - Maine, 28 - All Other Breeds (Any
breed not listed in either open shows)**

- Lot 1 Spring Heifer Calf, calved after March 1, Current Year
- Lot 2 Junior Heifer Calf, calved Jan 1 to Feb 28, Current Year
- Lot 3 Late Senior Heifer Calf, calved Nov 1 to Dec 31, Previous Year
- Lot 4 Early Senior Heifer Calf, Calved Sept 1 to Oct 31, Previous Year
- Lot 5 Summer Yearling Heifers, calved July 1 to Aug 31, Previous Year
- Lot 6 Spring Yearling Heifers, calved May 1, to June 30, Previous Year
- Lot 7 Late Junior Yearling Heifer, calved March 1 to April 30, Previous Year
- Lot 8 Early Junior Yearling Heifer, calved Jan 1 to Feb 28, Previous Year
- Lot 9 Senior Yearling Heifer, calved Sept 1 to Dec 31, 2nd Previous Year
- Lot 10 Best Pair of Females
- Lot 11 Grand Champion Female - \$30.00
- Lot 12 Reserve Grand Champion Female - \$20.00
- Lot 13 Junior Cow Calf Pair, cow under 40 months old with natural
Current Year calf at side
- Lot 14 Senior Cow Calf pair, cow over 40 months with natural Current
Year calf at side
- Lot 15 Champion Cow Calf Pair
- Lot 16 Spring Bull, calved after March 1, Current Year
- Lot 17 Junior Bull, calved after Jan 1 to Feb 28, Current Year
- Lot 18 Late Senior Bull, calved Nov 1 to Dec 31, Previous Year
- Lot 19 Early Senior Bull, calved Sept 1 to Oct 31, Previous Year
- Lot 20 Summer Yearling Bull, calved July 1, to Aug 31, Previous Year
- Lot 21 Spring Yearling bull, calved May 1, to June 30, Previous Year



DEPARTMENT 5

BEEF SHOW (OPEN Show 2)

(Continued)

- Lot 22 Late Junior Yearling Bull, calved March 1, to April 30, Previous Year
- Lot 23 Early Junior Yearling Bull, calved Jan 1, to Feb 18, Previous Year
- Lot 24 Senior Yearling Bull, calved Sept 1, to Dec 31, 2nd Previous Year
- Lot 25 Two Year Old Bull, calved Jan 1 to Aug 31, 2nd Previous Year
- Lot 26 Grand Champion Bull - \$30.00
- Lot 27 Reserve Grand Champion Bull - \$20.00
- Lot 28 Get of Sire, four animals by one sire, both sexes represented, show in the above lots
- Lot 29 Junior Get of Sire, three animals by one sire, both sexes represented
- Lot 30 Produce of Dam, any two animals produced by the same cow and exhibited in individual classes.

A large wooden barrel with a sign for "A to Z Spirits". The sign is white with black and red text. The text on the sign includes the business name, address, phone number, hours of operation, and a list of products. There are also small icons of a beer bottle, a liquor bottle, and a wine bottle. The barrel is dark brown and has metal hoops.

A to Z Spirits
117 Weakley Creek Road
Lawrenceburg, TN 38464
931-244-2016
Hours:
Monday - Thursday 9am to 9pm
Friday & Saturday 9am to 11pm
Closed on Sundays
-DRIVE THRU-
10am - 6pm
KEGS • LIQUOR • WINE • BEER • TOBACCO

DEPARTMENT 6

JUNIOR BEEF HEIFER SHOW

Superintendent: Calvin Bryant 931-762-5506
Mark Short 931-762-5519
931-829-3496

Arrive by 11:00 AM, Saturday, October 1st

Showtime 3:00 PM, Saturday, October 1st

Release by One (1) hour after the show

Tennessee Junior Livestock Exposition Rules will be used for this show

NATIONAL BREED REGISTRY AND RULES APPLY TO ALL CATTLE.

Classes to be determined based on number of animals and exhibitors after registration.

Classes to be determined after registration.

Current Year-2022, Previous Year-2021, 2nd Previous Year-2020

Premium: 1st - \$30.00, 2nd - \$20.00, 3rd - \$15.00, 4th - \$10.00, 5th - \$5.00

16J -% Simmental, 17J Angus/ Black, 18J Shorthorn Plus, 19J Shorthorn, 20J Simmental, 21J Chiangus, 22J Charolais, 23J Maine, 24J Other Breeds, 25J Red Angus, 26J Hereford

ALL CLASSES ARE THE SAME IN ALL BREEDS (Lots 1 thru 12)

- Lot 1 Spring Heifer Calf, calved after March 1, Current Year
- Lot 2 Junior Heifer Calf, calved Jan 1 to Feb 28, Current Year
- Lot 3 Late Senior Heifer Calf, calved Nov 1 to Dec 31, Previous Year
- Lot 4 Early Senior Heifer Calf, calved Sept 1 to Oct 31, Previous Year
- Lot 5 Summer Yearling Heifers, calved July 1 to Aug 31, Previous Year
- Lot 6 Spring Yearling Heifers, calved May 1 to June 30, 2nd Previous Year
- Lot 7 Late Junior Yearling Heifers, calved March 1 to April 30, Previous Year
- Lot 8 Early Junior Yearling Heifers, calved Jan 1 to Feb 28, Previous Year
- Lot 9 Senior Yearling Heifers, calved Sept 1 to Dec 31, 2nd Previous Year
- Lot 10 Grand Champion Female
- Lot 11 Reserve Champion Female
- Lot 12 Pee Wee Showmanship
- Lot 13 Junior Showmanship—Grades 4 – 6
- Lot 14 Junior High Showmanship - Grades 7-9
- Lot 15 Senior Showmanship – Grades 10 – 12

All livestock exhibited in any of the classes must be on the grounds at listed arrival times and must be in areas assigned to them. Any exhibitor leaving before designated release time without written permission from livestock superintendent will forfeit all premium money earned.



DEPARTMENT 7

COMMERCIAL HEIFERS

Five Classes of Commercial Heifers will be shown. Classes are broken by weight.

Any animal shown in Open Shows earlier in the week is ineligible for this class.

Premium: 1st - \$30.00, 2nd - \$20.00, 3rd - \$15.00, 4th - \$10.00, 5th - \$5.00

Weight brackets by class will be determined on the day of the show.

CLASS 27

- Lot 1 Light Weight
- Lot 2 Medium Light Weight
- Lot 3 Medium Weight
- Lot 4 Heavy Medium Weight
- Lot 5 Heavy Weight
- Lot 6 Grand Champion
- Lot 7 Reserve Grand Champion



Bassett®



Barnett
Brown &



**Voted #1 Furniture Store
Reader's Choice**

2008, 2009, 2010, 2011, 2013, 2014,
2015, 2016, 2017, 2018, 2019, 2020

3020 Florence Blvd. • Florence, AL 35634

256-767-1995 • barnettbrown.com

Monday - Saturday 9am to 5:30pm

DEPARTMENT 8
JR. MARKET LAMB & COMMERCIAL EWE SHOW
Superintendent: Calvin Bryant 931-762-5506

Monday, September 26th
Arrival Time 2pm
Showtime at the conclusion of the Open Breeding Sheep Show
Release 9pm

Premium: 1st - \$15.00, 2nd - \$12.00, 3rd - \$9.00, 4th - \$6.00, 5th - \$5.00

Grand Champion Commercial Ewe--\$30.00

Reserve Champion Commercial Ewe--\$20.00

Grand Champion Market Lamb--\$30.00

Reserve Champion Market Lamb--\$20.00

Animals will be released 1 hour following the show. No entry fee for Junior Show.

General Sheep Rules:

Market Lambs and Commercial Ewes must be exhibited by a Junior. A Junior is considered any youth old enough to show without help. Exhibitors can show no more than 3 Market Lambs and 3 Commercial Ewes. All sheep must be weighed on grounds and will be weighed only once. All Sheep must have scrapie tags and current Certificate of Veterinary Inspection. Pens will be available on a first come first basis. There will be 3 divisions of showmanship based on the grade the junior is currently in. The divisions will be:

Junior---5th grade and younger

Junior High---6th-8th grades

Senior High---9th-12th grades

For showmanship exhibitors may show either Commercial Ewes or Market Lambs.

Commercial Ewes

1. Exhibitors may show no more than 3 head of Commercial Ewes.
2. Open to nonregistered yearling ewes and ewe lambs of any breed or combination of breeds. Ewe lambs must have milk teeth and yearlings must have no more than 4 permanent teeth.
3. Commercial Ewes will be weighed and divided in classes by weight and by age (lambs & yearlings). If there are 10 or more head of hair sheep entered, show management will divide classes by weight, age and type---meaning hair breed lots will not show against wool breed lots.
4. Ewe lambs shown as Commercial Ewes cannot show as Market Lambs.

DEPARTMENT 8

JR. MARKET LAMB & COMMERCIAL EWE SHOW

(Continued)

Market Lambs

1. Exhibitors may show no more than 4 Market Lambs.
2. Market Lambs may be either wether or ewe lambs and must have milk teeth. Ewes shown in the Market Lamb Division are not eligible to show in the Commercial Ewe Show.
3. Lambs will be weighed and divided into classes by weight. If there are 10 or more head of hair sheep entered, show management will divide classes by both weight and type----meaning hair breed lots will not show against wool breed lots.

Lot 1 Senior High Showmanship – Grades 10-12

Lot 2 Junior High Showmanship – Grades 7-9

Lot 3 Junior Showmanship – Grades 4-6

Commercial Ewes

Lots 4-9 --- Lots will be posted after weigh-in.

Market Lambs

Lots 10-15 ---Lots will be posted after weigh-in.

Lot 16 Commercial Ewe Grand Champion

Lot 17 Commercial Ewe Reserve Champion

Lot 18 Market Lamb Grand Champion

Lot 19 Market Lamb Reserve Champion



NELSON
STUDIOS

Full-Service
Marketing Agency

nelsonstudios.co

- Branding
- Video / Live Stream
- 3D + 2D Animation
- Print Design
- Photography
- Web Development
- SEO
- Social Media

Outside-the-box creative content
for innovative, forward-thinking brands

DOSS BROTHERS INC
CONSTRUCTION

Barry Doss
President

Office 931-762-1531

931-829-1531

Fax 931-231-8298

Cell 931-242-3779

barrydoss@dossbrothers.com

www.dossbrothers.com

2784 Hwy 43 N Lawrenceburg, Tn 38464



General Contractor · Metal Buildings · Site Development · Paving



DOSS BROTHERS INC
CONSTRUCTION

DEPARTMENT 9 JUNIOR MEAT GOAT SHOW

Superintendent: Calvin Bryant 931-762-5506

Wednesday, September 28th
Arrival Time 2:00PM Day of Show
Show 5:00PM

Animals Released 9pm

Premium: 1st - \$15.00, 2nd - \$12.00, 3rd - \$9.00, 4th - \$6.00, 5th thru 8th - \$5.00

GOAT SHOW RULES

- 1) Any breed or crossbreed may show. There is a minimum weight of 30 pounds.
- 2) There will be three divisions of goats shown. "Market Goat for Slaughter" – "Replacement Doe Kids" – "Replacement Doe Yearlings".
- 3) Wether kids must not exhibit any testicular tissue. Animals having this will be dismissed.
- 4) Wether kids and doe kids must have all milk teeth at weigh-in. Kid goats that have lost either or both will be dismissed or moved to the yearling doe class.
- 5) Yearling does are allowed to have up to two sets of yearling teeth at weigh-in. Does with more than four yearling teeth will be grouped in one class and will be allowed to show in one class. The first place winner in this class---Lot 25---Other Does will be ineligible to show for champion.
- 6) All goats must have horns tipped or padded.
- 7) No billies or bucks will be allowed in the barn area.
- 8) Competition is limited to Junior Exhibitors.
- 9) All goats must be exhibited by a Junior. A Junior is considered any youth old enough to show without help. All Goats must have scrapie tags and current Certificate of Veterinary Inspection. Pens will be available on a first come first basis. There will be 3 divisions of showmanship based on the grade the jr. is currently in.
- 10) All goats must be identified by ear tag or tattoo; no collar tags will be accepted.
- 11) All goats must be shown with a collar, halter or chain.
- 12) All goats will be weighed and classes divided by weight in each of the three divisions of the show.
- 13) A champion will be selected of each division and the champions will be exhibited together for a Supreme Champion.
- 14) Any item that comes up at the show not covered by these rules will be decided by the Executive Committee of this show and their decision will be final.
- 15) Each exhibitor is limited to five (5) animals for the show.
- 16) Each exhibitor must supply their own bedding (NO STRAW), water pails and feed pans.
- 17) No Dogs allowed.

CLASS 37 MEAT GOATS

- Lot 1 Senior High Showmanship – Grades 10-12
Lot 2 Junior High Showmanship – Grades 7-9
Lot 3 Junior Showmanship – Grades 4-6
Lot 4-10 Classes for "Market Goat for Slaughter"
Lot 11-17 Classes for "Replacement Doe Kids"
Lot 18-24 Classes for "Replacement Yearling Does"
Lot 25 Other Does
Lot 26 Grand Champion Wether - \$25.00
Lot 27 Grand Champion Doe Kid - \$25.00
Lot 28 Grand Champion Doe Yearling - \$25.00
Lot 29 Supreme Champion - \$30.00



DEPARTMENT 10

YOUTH FIELD CROPS

Superintendent: Lindsey Hartsfield (931-629-3656)

Premium: 1st - \$8.00, 2nd - \$6.00, 3rd - \$3.00, Best of Show - \$10.00

CLASS 38 YOUTH CORN

Lot 1 Corn Any Variety (3 Stalks)
Lot 2 White Corn (10 Ears)

Lot 3 Yellow Corn (10 Ears)
Lot 4 Best of Show

CLASS 39 YOUTH SOYBEANS

Lot 1 Stalks Essex (3)
Lot 2 Stalks York (3)
Lot 3 Stalks Forrest (3)

Lot 4 Stalks Bedford (3)
Lot 5 Stalks any other (3)
Lot 6 Best of Show

CLASS 40 YOUTH GARDEN VEGTABLES

Lot 1 Banana Peppers (5)
Lot 2 Jalapeno Peppers (5)
Lot 3 Peppers, Any Other Kind (5)
Lot 4 Plate Sweet Bell Peppers (3)
Lot 5 Plate Okra (6)
Lot 6 Plate Green Beans (6)
Lot 7 Plate of Salad Tomatoes
Lot 8 Plate of Tomatoes any kind (5)
Lot 9 Plate Irish Potatoes (5)
Lot 10 Popcorn (3) ears
Lot 11 Peanuts (3) plants any kind
Lot 12 Watermelon any variety
Lot 13 Gourd, Any Kind
Lot 14 Plate of Apples

Lot 15 Plate of Pears
Lot 16 Plate Yellow Onions (3)
Lot 17 Plate White Onions (3)
Lot 18 Plate Field Peas (6)
Lot 19 Plate Eggplant (2)
Lot 20 Plate Winter Squash (2)
Lot 21 Plate Summer Squash (2)
Lot 22 Cucumber (2)
Lot 23 Sweet Potato (3)
Lot 24 Sunflower
Lot 25 Garden Display
Lot 26 Halloween pumpkin
Lot 27 Field pumpkin
Lot 28 Best of Show

KELLEY INSURANCE

931-766-1119

AUTO - HOME - HEALTH - LIFE